


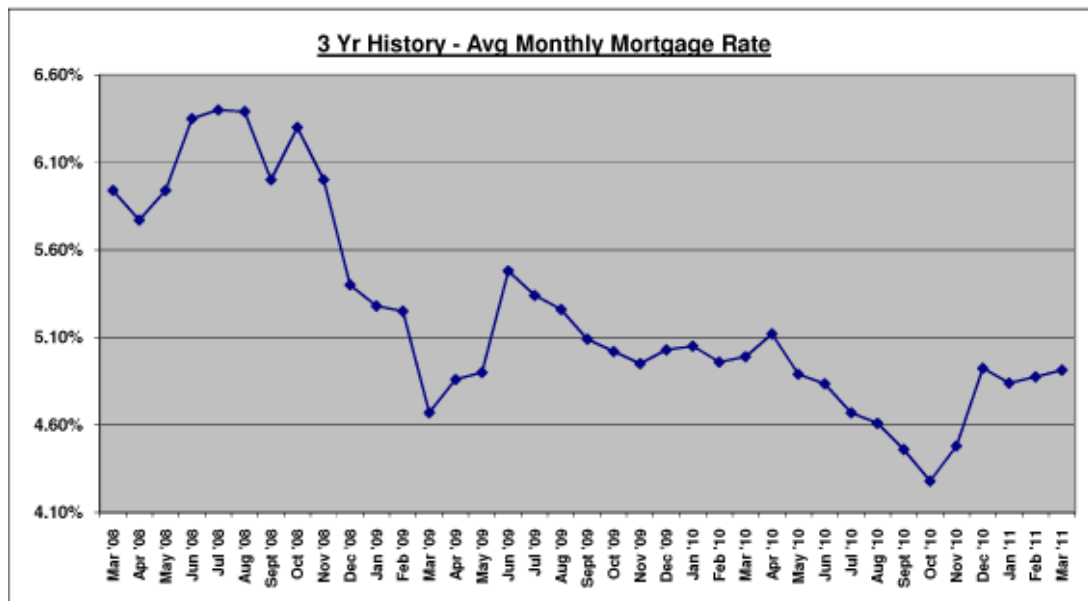
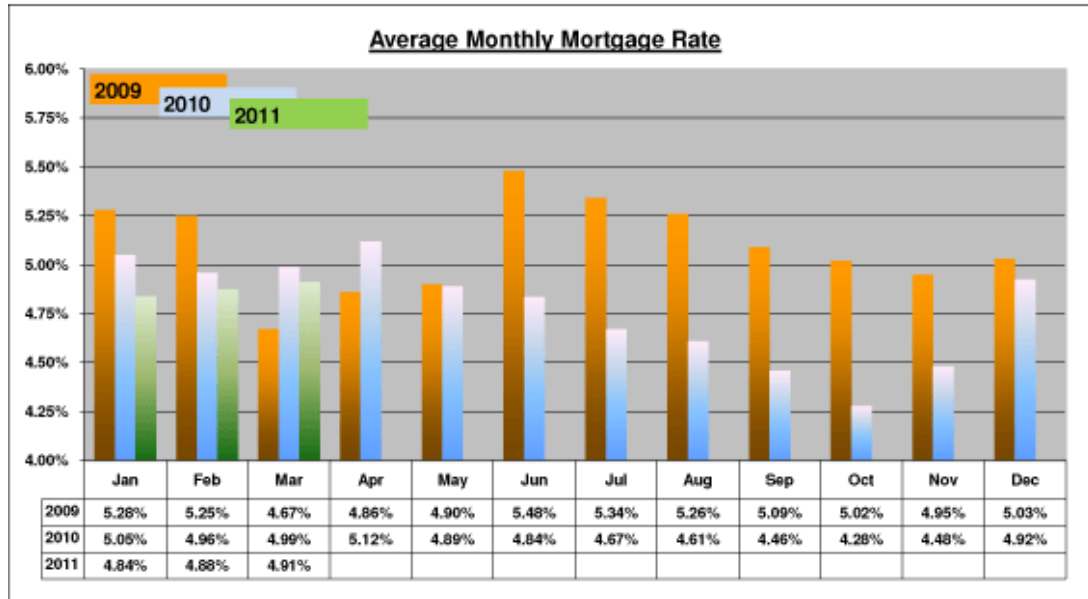
ORRA Originated Sales	Average Mtg. Rate	Inventory	New Listings	New Contracts	Under Contract	Back on the Market	Expired	Withdrawn	Sales Closed	Avg. Days on Market
March 2010	4.99%	16,223	5,282	4,662	10,179	1,195	680	1,233	2,610*	91*
April 2010	5.12%	15,766	5,116	5,221	10,832	1,331	579	1,540	2,644*	81*
May 2010	4.89%	15,963	4,304	3,669	10,351	1,161	553	1,187	2,783*	83*
June 2010	4.84%	16,304	4,470	3,736	9,625	1,343	743	1,294	3,059*	85*
July 2010	4.67%	16,563	4,388	3,793	9,133	1,224	709	1,182	2,516*	84*
August 2010	4.61%	16,535	4,146	3,892	8,945	1,277	613	1,285	2,566*	83*
Sept. 2010	4.46%	16,359	3,984	3,654	8,713	1,169	637	1,301	2,374*	87*
October 2010	4.28%	15,441	3,650	3,466	8,817	1,080	707	1,323	1,953*	91*
Nov. 2010	4.48%	15,192	3,346	3,243	8,998	999	630	1,083	1,936*	96*
Dec. 2010	4.92%	14,993	3,444	3,196	8,363	952	1,189	1,039	2,467*	97*
January 2011	4.84%	14,398	3,478	3,747	8,777	1,009	573	1,102	2,041*	96*
Feb. 2011	4.88%	13,480	3,202	3,777	9,223	934	499	1,018	2,170*	99*
March 2011	4.91%	12,533	4,152	4,526	9,510	820	504	1,098	2,485	103
ORRA Originated Sales	Average Mtg. Rate	Inventory	New Listings	New Contracts	Under Contract	Back on the Market	Expired	Withdrawn	Sales Closed	Avg. Days on Market

\* Monthly revised sales. Complete stats and data may be found under Housing Statistics at [orlandorealtor.com](http://orlandorealtor.com).  
Comments or suggestions? Contact [Mike Blinn](#), Statistician.

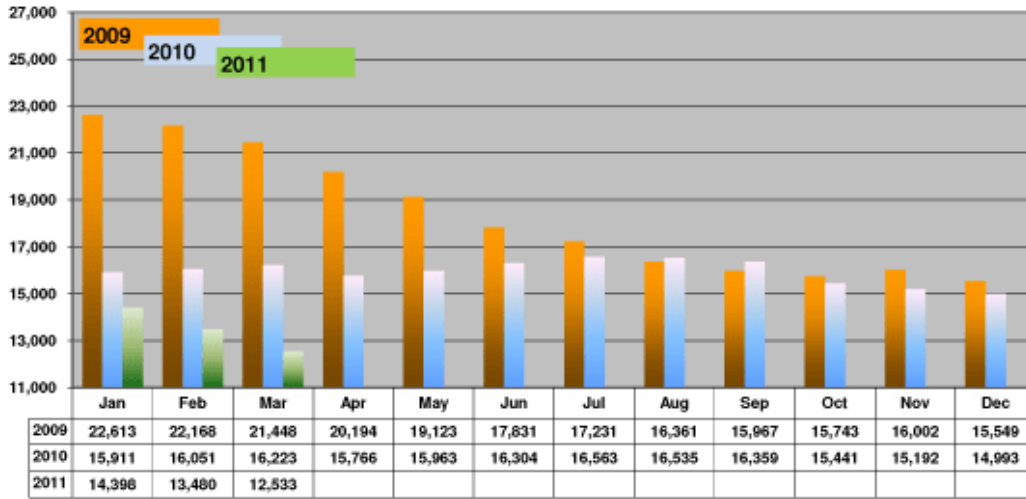
Market Pulse™ data represents all listings taken or sold by ORRA brokers, regardless of location and is exclusive to residential property, which includes townhomes, duplexes, single-family homes, and condos. It does not include vacant land or commercial transactions.

<b>Membership</b>	<b>3-11</b>	<b>3-10</b>
<b>ORRA</b>	8,469	8,860
<b>Affiliates</b>	272	289
<b>Applicants</b>	143	165

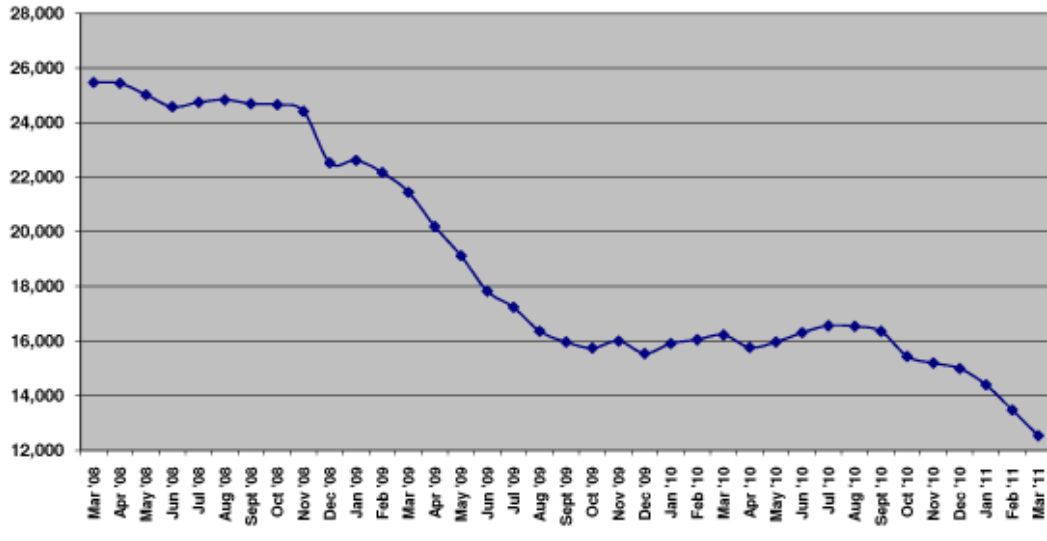
<b>Unemployment Rate</b>	<b>Orlando MSA</b>
<b>February 2011</b>	10.8%
<b>February 2010</b>	11.6%
	



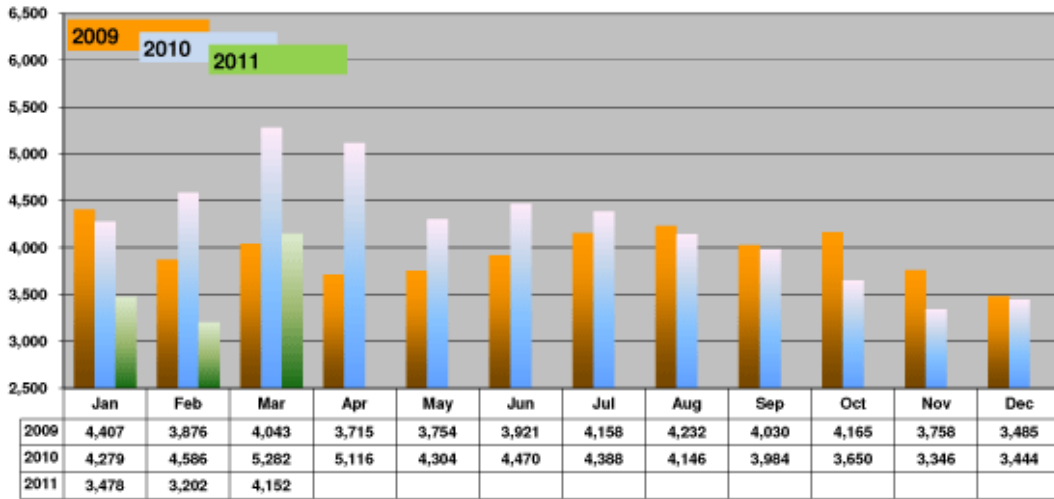
### Inventory



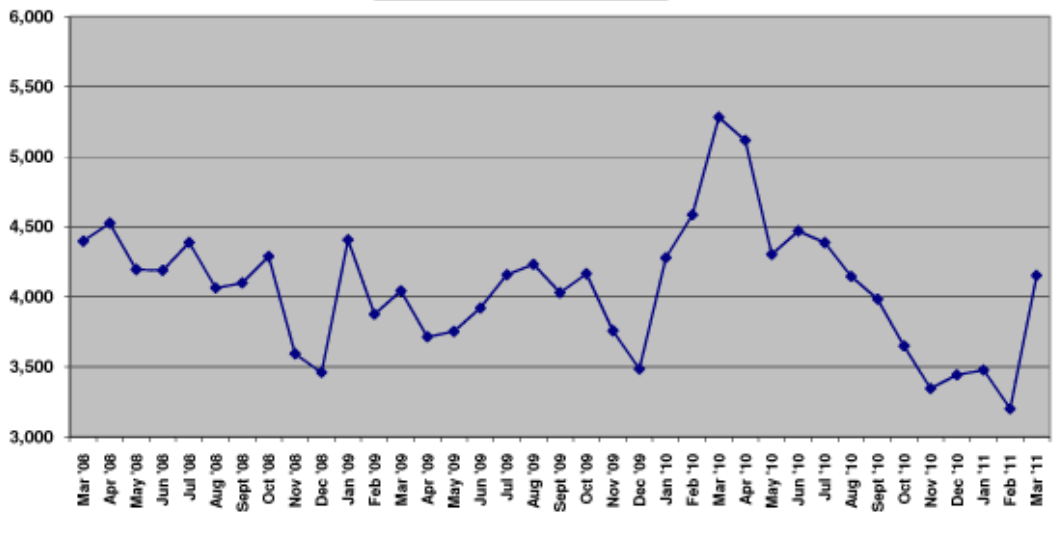
### 3 Yr History - Inventory



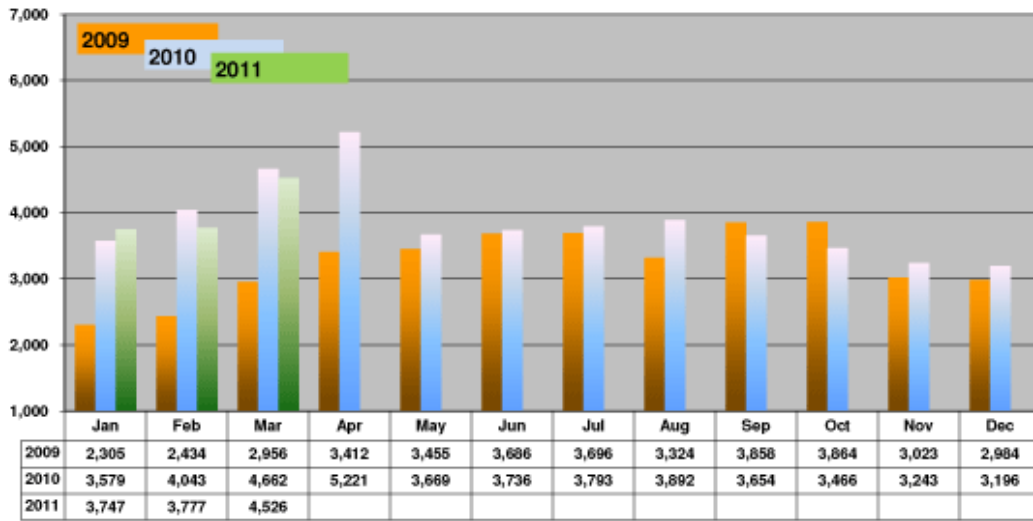
### New Listings



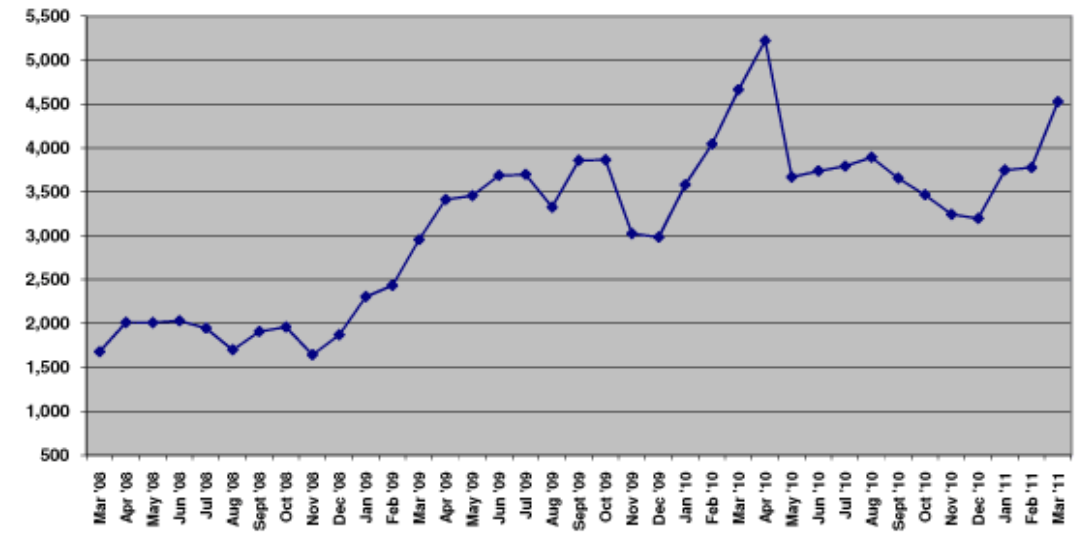
### 3 Yr History - New Listings



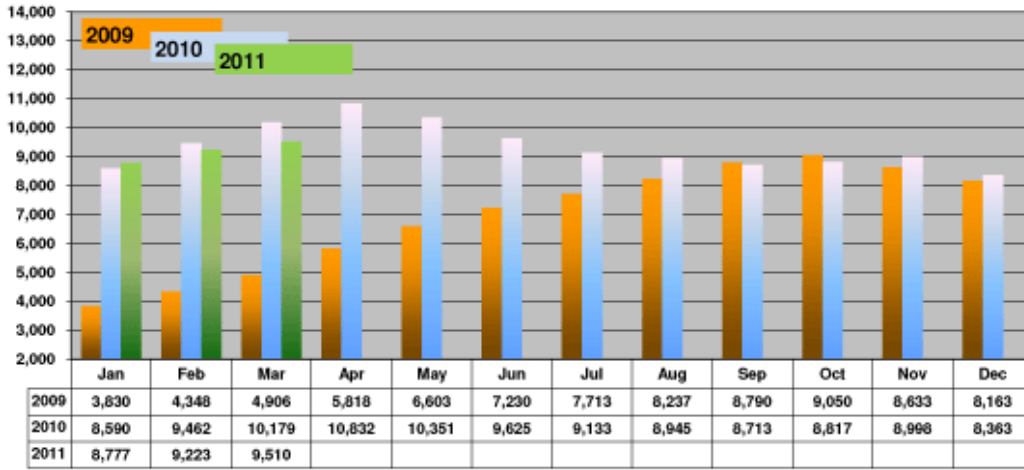
**New Contracts - Monthly**



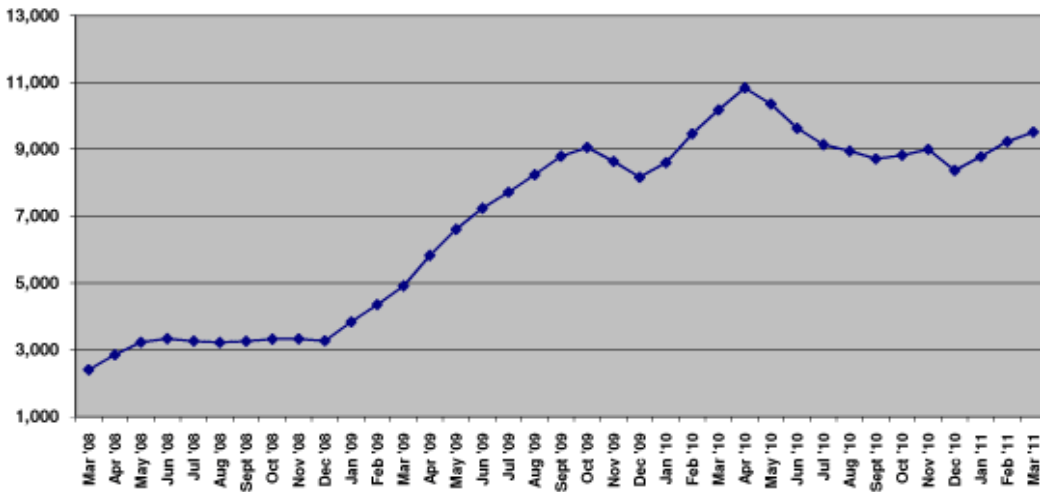
**3 Yr History - New Contracts**



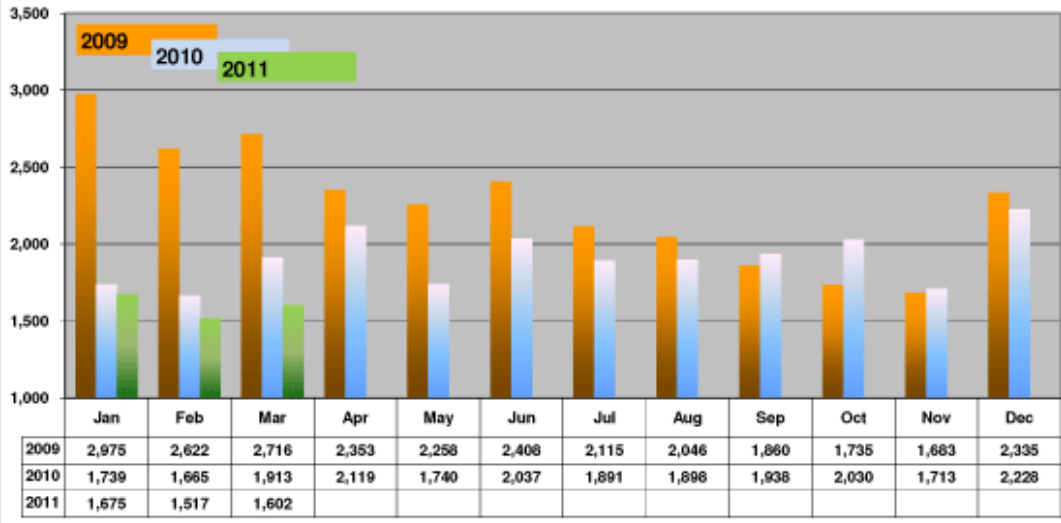
### Total Under Contract



### 3 Yr History - Monthly Total Under Contract



**Units off the Market - Withdrawn or Expired**



**3 Yr History - Units off the Market - Withdrawn or Expired**

